

## Wiinindib 360°

## G'wiinidib

### Wiinindib 360°

Newen ginaagmiseg aaboon zhiwe miishkoons etemigag maadookidaagemigag owi naasaab bimaadziikemigag zhiwe wiinindib e'zhinomaagemigag wiinindib maajiiing. Zhiwe maanda zhichigewin, waajii'ejig gikendaanaa-aa newen debwewinan owi miishkoons endodaagemigag ensa bezhig etemigag zhiwe nendowendaagwog ondibaang etemigag, miinwaa gnimaa age zhiwebkiba gneshtani aawong. Waajii-ejjig ada gashkitonaa-aa awii ginowaabmdamiwaad nowonj newen etegin owi wiinindib miinwaa nisastamiwaad eshichigemigag, miinwaa owi bitaakshkaagewin miishkoons nikaazang age ayaawong. Gichi piitendaagwod awii gagetinaamtaagozing owi miishkoons nikaazang adaa gichi binaajichigewin newen eshkiniigijig wiinindibiwaan zaam owi wiinindib ayaabi

maajiiing apiinish niishtana shi naanon piitizing. Dash owi onji, eshkiniigijig memdage niizaanziwog newen madookidaagewinan owi miishkoons owi wiinindib maajiiing miinwaa nakiimigag.

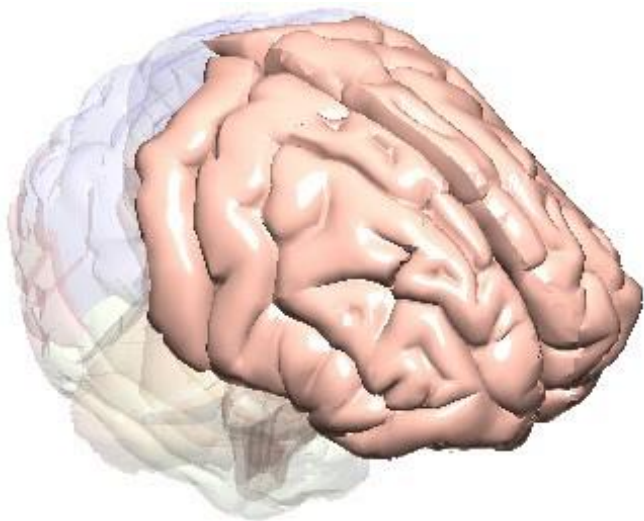
### G'wiinidib

Nda gikendan newen nowonj etemigag zhiwe wiinindib awii gikendaman owi bebishig ninda ezhi naadmaagiying awii bimaadiziying nigo giizhad miinwaa ensa giizhigag. Owi maanda zhichigewin, gdaa gikendaan newen debwewinan owi nikiiyaa miishkoons ezhi madookidaagemigag ensa bezhig etemigag owi maanda nendowendaagwog ondibaang etemigag, miinwaa gnimaa age zhiwebikiba gneshtani aawong.



# Naagidowendamang Miinwaa Inaaknigeng

## Frontal Lobe



### Naagidowendamang Miinwaa Inaaknigeng, Giizhendamang, Gikendamaawiziwinan, Giigidowin / Iniwewin Endoodamang

#### Maya Enankiimigag

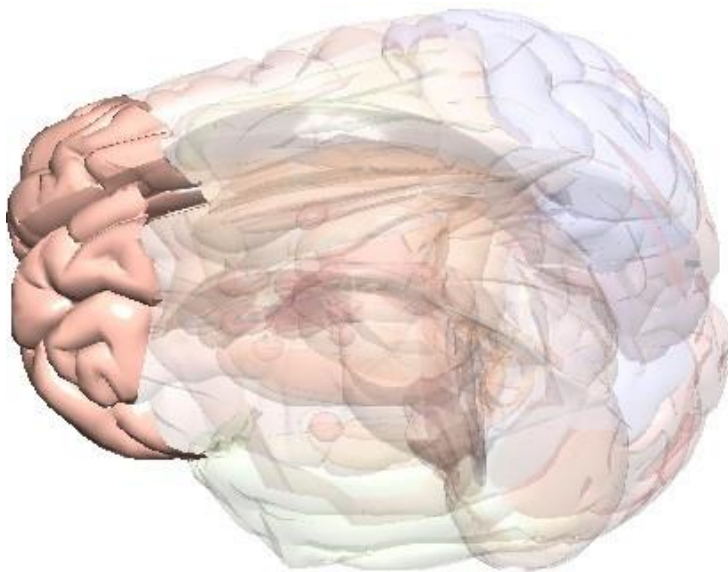
Owi frontal lobe aawon owi etemigag owi wiinindib gikendamowin miinwaa ne-aab debinam newen minjinendamowinan, zinagiziwinan naawitoong, inaaknigewin, inwiwewin, dinaangidoniwin, naagidowendamang, miinwaa bimaajjiwin.

#### Debwewin

Newen gnigaagimiseg naabon zhiwe miishkoons (dishko gona THC) zagisinon newen wiinindib wiikibijibigemigag (cannabinoid wiikibijigewinan) etemigag zhiwe etemigag owi frontal lobe. Ninda gnigaagimiseg naabon adaa aanjironan nikiiyaa wiinindib agaasing enji maajjiging ginondiwaad. Inendamowin nyaagidowendamang adaa madookidaan newen bemaadzijig inendamowin, gashkitowaad awii zhitowaad giizhendamowinan, inaaknigewaad, ozhisidowaad dinendamowinan miinwaa endodamowaad, zhitowaad makwenjigewinan miinwaa ne-aab debinamiwaad makwenjigewinan, naagidowendamang.

# Naagidowendamang Miinwaa Inaaknigeng

## Prefrontal Cortex



### Naagidowendamang Miinwaa Inaaknigeng, Giizhendamang, Doodamowing

#### Maya Enankiimigag

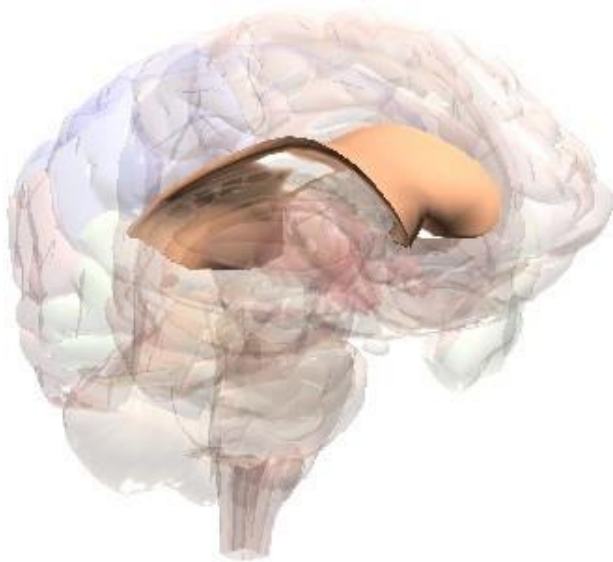
Owi Prefrontal Cortex aawon waajitemigag owi fontal lobe zhiwe owi wiinindib naagidowendamang, inaakinigemigag, miinwaa zhitood giizhendamowinan.

### Debwewin

Newen gnigaagimiseg naabon zhiwe miishkoons (dishko gona THC) zagisinon newen wiinindib wiikibijibigemigag (cannabinoid wiikibijigewinan) etemigag zhiwe owi prefrontal cortex. Ninda gnigaagimiseg naabon adaa aanjironan nikiiyaa wiinindib agaasing enji maajjiging ginondiwaad. Zhiwe prefrontal cortex adaa madookidaadaan owi nikiiyaa bemaadizid enendamang, gashkitowaad awii zhitowaad giizhendamowinan, inaaknigewaad miinwaa ozhisidowaad dinendamowinan.

# Naagidowendamang Miinwaa Inaaknigeng

## Corpus Callosum



**Naagidowendamang  
Miinwaa Inaaknigeng  
Bimaajiiwin Miinwaa  
Maamowi Bimaajiiwigag  
Wiiyaw, Giizhendamang,  
Izhayaawin Miinwaa  
Inendamowin,  
Nisidoziwinan,  
Endoodaman**

### **Maya Enankiimigag**

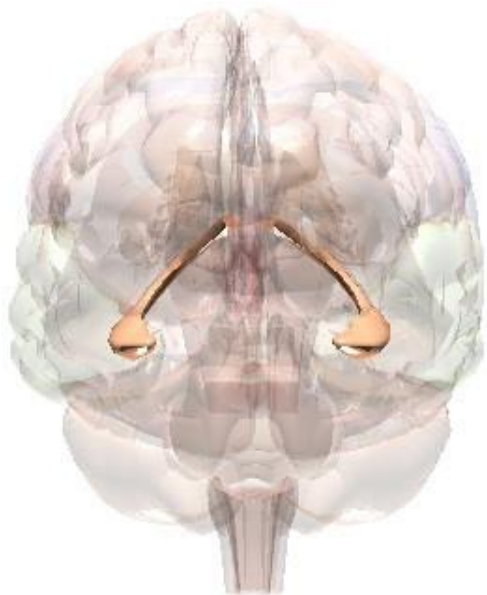
Owi Corpus Callosum dikobijigemigad newen niish ediwiwiing owi wiinindib awii naadmaagemigag dikobideg gikendamowin.

### **Debwewin**

Newen gnigaagimiseg naabon zhiwe miishkoons (dishko gonaa THC) zagisinon newen wiinindib wiikibijibigemigag (cannabinoid wiikibijigewinan) etemigag zhiwe corpus callosum. Ninda gnigaagimiseg naabon adaa aanjironan nikiiyaa wiinindib agaasing enji maajiiing ginondiwaad. Zhiwe corpus callosum, adaa dodaagemigad ayaamang giiwaajibidemigag, myagi maage giiwaaji inendamowinan. Maanda age adaa ani aawon giiwashkweyaadiziwin, giiwinaadendamowin (gewe giizhaa e'niizaanziwaad).

# Naagidowendamang Miinwaa Inaaknigeng

## Hippocampus



### Naagidowendamang Miinwaa Inaaknigeng, Giizhendamang

#### Maya Enankiimigag

Owi hippocampus aawon zhiwe owi wiinindib maaminaamdang miinwaa zigakinang makwendamowinan.

### Debwewin

Newen gnigaagimiseg naabon zhiwe miishkoon (dishko gona THC) zagisinon newen wiinindib wiikibijibigemigag (cannabinoid wiikibijigewinan) etemigag zhiwe hippocampus owi. Zhiwe owi hippocampus, adaa dodaagemigad owi naajitoong makwendamowin miinwaa zinagag gikendamang shkiwii gego miinwaa giizhendamang.



# Bimaajiiwin Miinwaa Maamowi Nakiimigag Wiiyaw

## Cerebellum



### Bimaajiiwin Miinwaa Maamowi Bimaajiiwigag Wiiyaw

#### Maya Enankiimigag

Owi cerebellum aawon zhiwe owi wiinindib naagidowendang bimaajiiwin miinwaa maamowi bimaajiiwigag wiiyaw.

### Debwewin

Newen gnigaagimiseg naabon zhiwe miishkoon (dishko gona THC) zagisinon newen wiinindib wiikibijigemigag (cannabinoid wiikibijigewinan) etemigag zhiwe owi cerebellum. Ninda gnigaagimiseg naabon adaa aanjironan nikiiyaa wiinindib agaasing enji maajiiing ginondiwaad. Zhinda cerebellum, adaa ani aawon owi giwishkowendibeng maage naajitoong dibshko'ayaamiwin/maamowi nakiimigag wiiyaw owi age zhichigeng gego dowendaagwog maamowi nakiimigag wiiyaw, dibshko gona bamibizochigeng, niizaanag.

# Bimaajiiwin Miinwaa Maamowi Nakiimigag Wiiyaw

## Basal Ganglia



### Bimaajiiwin Miinwaa Wiiji Nakiimigag Wiiyaw

#### Maya Enankiimigag

Owi basal ganglia aawon owi wiinindib naagizowaabmdang bimaajiiwin miinwaa wiiji nakiimigag wiiyaw.

### Debwewin

Newen gnigaagimiseg naabon zhiwe miishkoons (dishko gona THC) zagisinon newen wiinindib wiikibijbigemigag (cannabinoid wiikibijigewinan) etemigag zhiwe owi basal ganglia. Ninda gnigaagimiseg naabon adaa aanjironan nikiiyaa wiinindib agaasing enji maajiiging ginondiwaad. Zhiwe owi basal ganglia adaa ani aawon owi zignagizing maamowi nakiimigag wiiyaw zhichigeng gego dowendaagwog maamowi nakiimigag wiiyaw, dibishko gona bamibizochigeng, niizaanag.

# Bimaajiiwin Miinwaa Maamowi Nakiimigag Wiiyaw

## Corpus Callosum



**Naagidowendamang  
Miinwaa Inaaknigeng  
Bimaajiiwin Miinwaa  
Maamowi Bimaajiiwigag  
Wiiyaw, Giizhendamang,  
Izhayaawin Miinwaa  
Inendamowin,  
Nisidoziwinan,  
Endoodaman**

### **Maya Enankiimigag**

Owi Corpus Callosum dikobijigemigad newen niish ediwiwiing owi wiinindib awii naadmaagemigag dikobideg gikendamowin.

### **Debwewin**

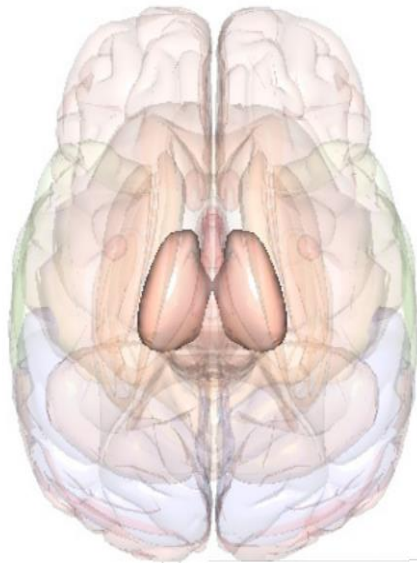
Newen gnigaagimiseg naabon zhiwe miishkoons (dishko gonaa THC) zagisinon newen wiinindib wiikibijibigemigag (cannabinoid wiikibijigewinan) etemigag zhiwe corpus callosum. Ninda gnigaagimiseg naabon adaa aanjironan nikiiyaa wiinindib agaasing enji maajiging ginondiwaad. Zhiwe corpus callosum, adaa dodaagemigad ayaamang giiwaajibidemigag, myagi maage giiwaaji inendamowinan. Maanda age adaa ani aawon giiwashkweyaadiziwin, giiwinaadendamowin (gewe giizhaa e'niizaanziwaad).





# Bimaajiiwin Miinwaa Maamowi Nakiimigag Wiiyaw

## Thalamus



### Bimaajiiwin Miinwaa Maamowi Nakiimigag Wiiyaw, Endodamang

#### Maya Enankiimigag

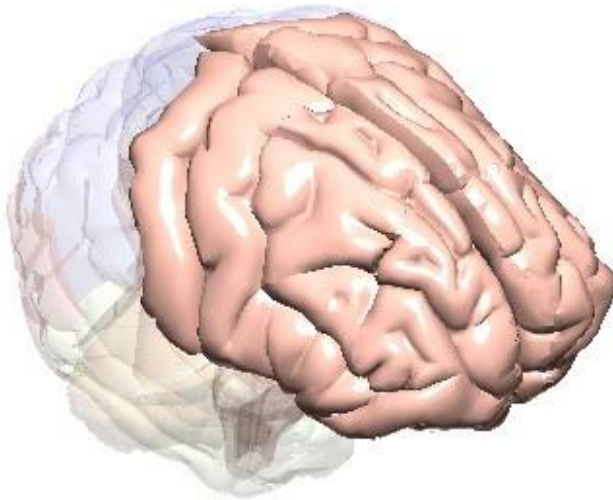
Newen gnigaagimiseg naabon zhiwe miishkoon (dishko gona THC) zagisinon newen wiinindib wiikibijibigemigag (cannabinoid wiikibijigewinan) etemigag zhiwe owi thalamus, Zhiwe thalamus, maanda ada ani zhiwebad naajitoong maamowi nakiimigag wiiyaw, aanjibidemigag owi nibewin/gizhkoziwin ezhibidemigag, miinwaa aanjiseemigag endoodamang e' digosing giwashkweyaadiziwin miinwaa giwinaadendamowin (gewe giizhaa e'niizaanziwaad).

### Debwewin

Newen gnigaagimiseg naabon zhiwe miishkoon (dishko gona THC) zagisinon newen wiinindib wiikibijibigemigag (cannabinoid wiikibijigewinan) etemigag zhiwe owi thalamus. Ninda gnigaagimiseg naabon adaa aanjironan nikiiyaa wiinindib agaasing enji maajiging ginondiwaad. Zhiwe owi thalamus adaa ani aawon owi naajitoong maamowi nakiimigad wiiyaw, aanjibidemigag owi nibewin-gizhkoziwin ezhibidemigag, miinwaa aanjiseemigag endoodamang e' digosing giwashkweyaadiziwin miinwaa giwinaadendamowin (gewe giizhaa e'niizaanziwaad).

Giizhendamowin Zhichigaadeg

## Frontal Lobe



### **Naagidowendamang Miinwaa Inaaknigeng, Giizhendamang, Gikendamaawiziwinan, Giigidowin / Iniwewin Endoodamang**

#### **Maya Enankiimigag**

Owi frontal lobe aawon owi etemigag owi wiinindib gikendamowin miinwaa ne-aab debinam newen minjinendamowinan, zinagiziwinan naawitoong, inaaknigewin, inwiwewin, dinaangidoniwin, naagidowendamang, miinwaa bimaajjiwin.

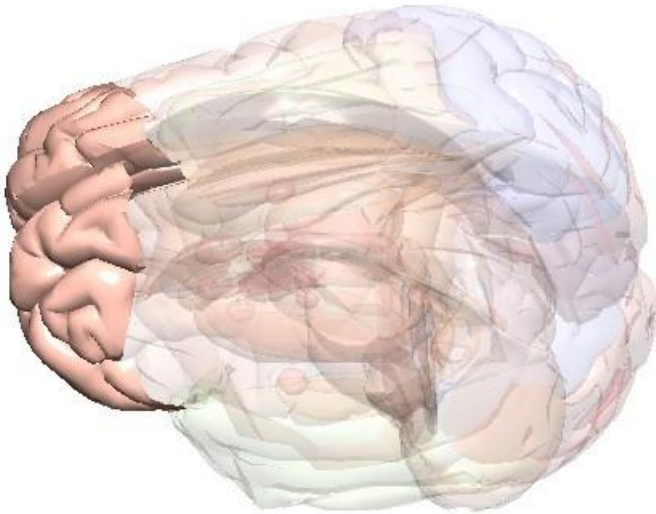
#### **Debwewin**

Newen gnigaagimiseg naabon zhiwe miishkoons (dishko gona THC) zagisinon newen wiinindib wiikibijibigemigag (cannabinoid wiikibijigewinan) etemigag zhiwe etemigag owi frontal lobe. Ninda gnigaagimiseg naabon adaa aanjironan nikiiyaa wiinindib agaasing enji maajjiing ginondiwaad. Inendamowin nyaagidowendang adaa madookidaan newen bemaadzijig inendamowin, gashkitowaad awii zhitowaad giizhendamowinan, inaaknigewaad, ozhisidowaad dinendamowinan miinwaa endodamowaad, zhitowaad makwenjigewinan miinwaa ne-aab debinamiwaad makwenjigewinan, naagidowendamang.



Giizhendamowin zhichigaadeg

## Prefrontal Cortex



### **Naagidowendamang Miinwaa Inaaknigeng, Giizhendamang, Doodamowing**

#### **Maya Enankiimigag**

Owi Prefrontal Cortex aawon waajitemigag owi fontal lobe zhiwe owi wiinindib naagidowendang, inaakinigemigag, miinwaa zhitood giizhendamowinan.

### **Debwewin**

Newen gnigaagimiseg naabon zhiwe miishkoons (dishko gonaa THC) zagisinon newen wiinindib wiikibijibigemigag (cannabinoid wiikibijigewinan) etemigag zhiwe owi prefrontal cortex. Ninda gnigaagimiseg naabon adaa aanjironan nikiiyaa wiinindib agaasing enji maajjiging ginondiwaad. Zhiwe prefrontal cortex adaa madookidaadaan owi nikiiyaa bemaadizid enendang, gashkitowaad awii zhitowaad giizhendamowinan, inaaknigewaad miinwaa ozhisidowaad dinendamowinan.



Giizhendamowin zhichigaadeg

## Orbitofrontal Cortex



### Giizhendamowin Zhichigaadeg

#### Maya Enankiimigag

Owi Orbitofrontal Cortez aawon zhiwe owi wiinindib zhitood giizhendamowinan.

### Debwewin

Newen gnigaagimiseq naabon zhiwe miishkoons (dishko gonaa THC) zagisinon newen wiinindib wiikibijibigemigag (cannabinoid wiikibijigewinan) etemigag zhiwe owi orbitofrontal cortex. Ninda gnigaagimiseq naabon adaa aanjironan nikiiyaa wiinindib agaasing enji maajiiging ginondiwaad. Zhiwe owi orbitofrontal cortex, adaa madookidaagemigad owa bemaadizid gashkitood awii zhitood giizhendamowinan.

Giizhendamowin zhichigaadeg

## Corpus Callosum



**Naagidowendamang  
Miinwaa Inaaknigeng  
Bimaajiiwin Miinwaa  
Maamowi Bimaajiiwigag  
Wiiyaw, Giizhendamang,  
Izhayaawin Miinwaa  
Inendamowin,  
Nisidoziwinan,  
Endoodaman**

### **Maya Enankiimigag**

Owi Corpus Callosum dikobijigemigad newen niish ediwiwiing owi wiinindib awii naadmaagemigag dikobideg gikendamowin.

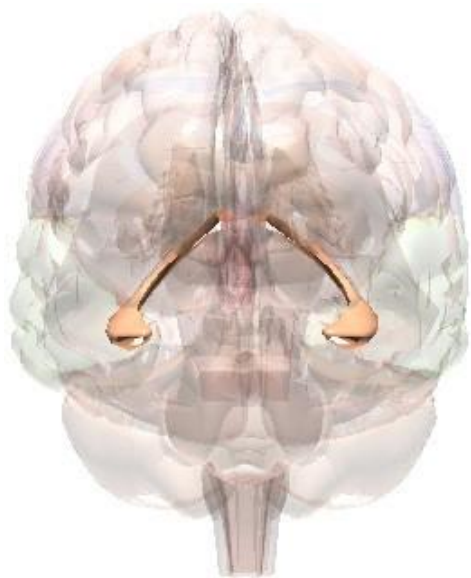
### **Debwewin**

Newen gnigaagimiseg naabon zhiwe miishkoons (dishko gonaa THC) zagisinon newen wiinindib wiikibijibigemigag (cannabinoid wiikibijigewinan) etemigag zhiwe corpus callosum. Ninda gnigaagimiseg naabon adaa aanjironan nikiiyaa wiinindib agaasing enji maajjiging ginondiwaad. Zhiwe corpus callosum, adaa dodaagemigad ayaamang giiwaajibidemigag, myagi maage giiwaaji inendamowinan. Maanda age adaa ani aawon giiwashkweyaadiziwin, giiwinaadendamowin (gewe giizhaa e'niizaanziwaad).



Giizhendamowin zhichigaadeg

## Hippocampus



### Naagidowendamang Miinwaa Inaaknigeng, Giizhendamang

#### Maya Enankiimigag

Owi hippocampus aawon zhiwe owi wiinindib maaminaamdang miinwaa zigakinang makwendamowinan.

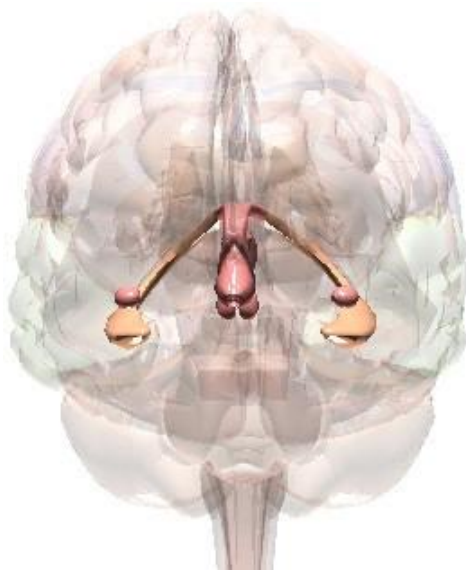
### Debwewin

Newen gnigaagimiseg naabon zhiwe miishkoons (dishko gonaa THC) zagisinon newen wiinindib wiikibijibigemigag (cannabinoid wiikibijigewinan) etemigag zhiwe hippocampus owi. Zhiwe owi hippocampus, adaa dodaagemigad owi naajitoong makwendamowin miinwaa zinagag gikendamang shkiwii gego miinwaa giizhendamang.



# Inendamowinan Miinwaa Izhayaawinan

## Limbic System



### Inendamowinan Miinwaa Izhayaawinan

#### Maya Enankiimigag

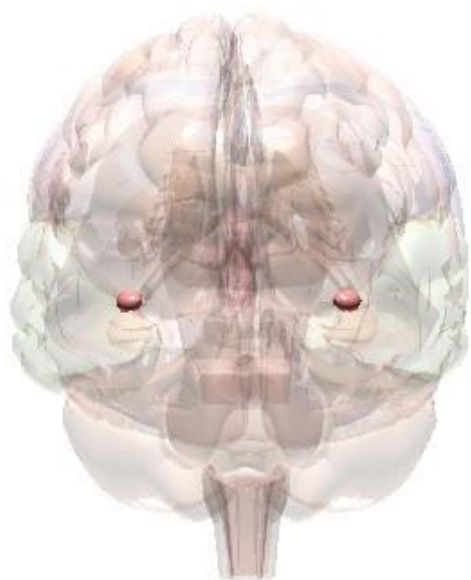
Owi limbic system aawon zhiwe owi wiinindib bimaabiiginang inendamowinan. Owi digosinon newen cingulate gyrus, owi hippocampus miinwaa owi amygdala.

### Debwewin

Newen gnigaagimiseg naabon zhiwe miishkoons (dishko gona THC) zagisinon newen wiinindib wiikibijibigemigag (cannabinoid wiikibijigewinan) etemigag zhiwe owi limbic system. Ninda gnigaagimiseg naabon adaa aanjironan nikiiyaa wiinindib agaasing enji maajiiging ginondiwaad. Zhiwe limbic system, adaa ani aawon owi aanjiseemigag newen inendamowinan dibishko gona mina nendamang, maamiikwendamang, bizaanendamang, aanimendamang, gichi maanaadendamang maage zizegendamang.

# Inendamowinan Miinwaa Izhayaawinan

## Amygdala



### Inendamowinan Miinwaa Izhayaawinan

#### Maya Enankiimigag

Owi amygdala aawon zhiwe owi wiinindib bimaabiiginang inendamowinan dibishko gona zisegandamang miinwaa aanimendamang.

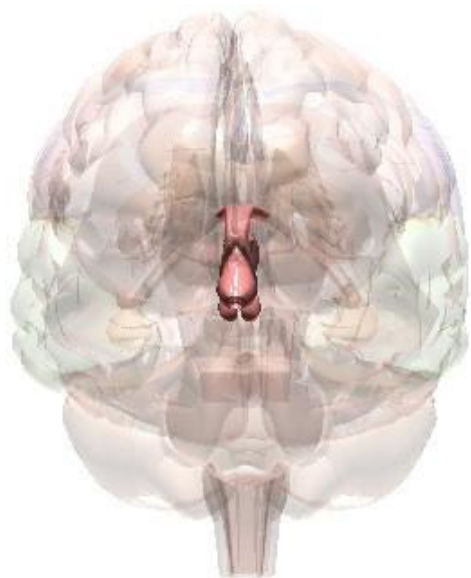
### Debwewin

Newen gnigaagimiseq naabon zhiwe miishkoons (dishko gona THC) zagisinon newen wiinindib wiikibijibigemigag (cannabinoid wiikibijigewinan) etemigag zhiwe owi limbic system. Ninda gnigaagimiseq naabon adaa aanjironan nikiiyaa wiinindib agaasing enji maajiiging ginondiwaad. Zhiwe amygdala adaa ani aawon owi aanjisemigag newen inendamowinan dibishko gona aanimendamang, zizegendamang maage bizaanendamang.



# Inendamowinan Miinwaa Izhayaawinan

## Hypothalamus



### Inendamowinan Miinwaa Izhayaawingan, Endoodamang

#### Maya Enankiimigag

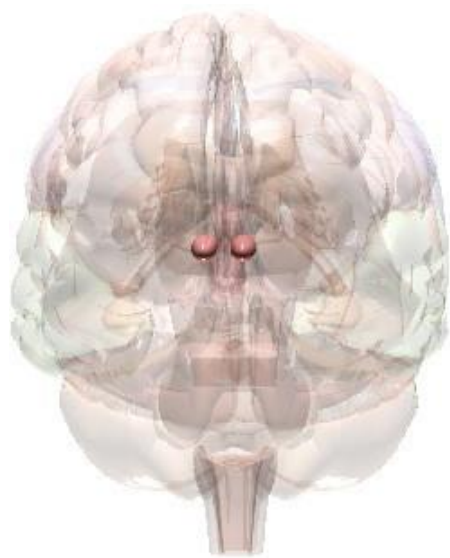
Owi hypothalamus aawon owi wiinindib gimaakidang nibewin, jepindamang, zaabendamang awii wiisining miinwaa gaaskinaabaagwewin miinwaa age ezhi nakweshkaman godogitowendamowin.

### Debwewin

Newen gnigaagimiseg naabon zhiwe miishkoons (dishko gonaa THC) zagisinon newen wiinindib wiikibijibigemigag (cannabinoid wiikibijigewinan) etemigag zhiwe owi hypothalamus. Ninda gnigaagimiseg naabon adaa aanjironan nikiiyaa wiinindib agaasing enji maajjiging ginondiwaad. Zhiwe owi hypothalamus, adaa ani aawon maanda ekozing, giikiimigoshing miinwaa bekaadenadmang. Maanda age adaa ani aawon bakade asayaawin ('owi aabaji wiisining') miinwaa gaaskinaabegiweng.

# Inendamowinan Miinwaa Izhayaawinan

## Nucleus Accumbens



### Inendamowinan Miinwaa Izhayaawingan, Endoodamang

#### Maya Enankiimigag

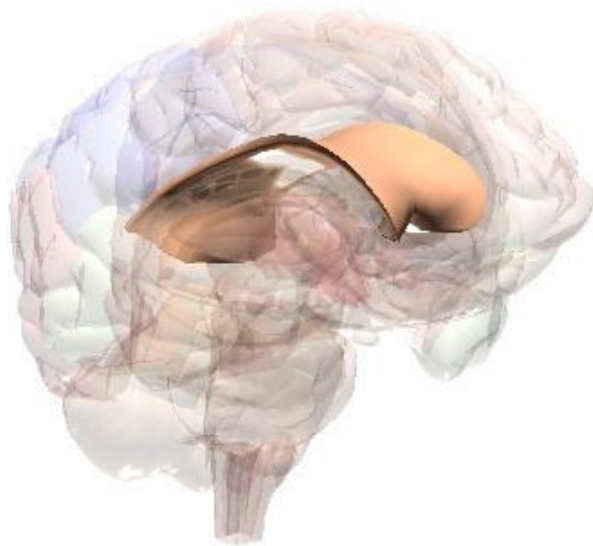
Owi nucleus accumbens aawon owi wiinindib ado minendamowin miinwaa dibamaadiwin zhichigewin miinwaa gagwekisidoon jependamowin.

### Debwewin

Newen gnigaagimiseg naabon zhiwe miishkoons (dishko gona THC) zagisinon newen wiinindib wiikibijibigemigag (cannabinoid wiikibijigewinan) etemigag zhiwe owi nucleus accumbens. Ninda gnigaagimiseg naabon adaa aanjironan nikiiyaa wiinindib agaasing enji maajjiging ginondiwaad. Zhiwe owi nucleus accumbens, maanda adaa ani aawon 'oshpi namgiwin' apii nikaazang miishkoons miinwaa maajitaamigag penimandmang maage mimanjimigiwin miishkoons.

# Inendamowinan Miinwaa Izhayaawinan

## Corpus Callosum



**Naagidowendamang  
Miinwaa Inaaknigeng  
Bimaajiiwin Miinwaa  
Maamowi Bimaajiiwigag  
Wiiyaw, Giizhendamang,  
Izhayaawin Miinwaa  
Inendamowin,  
Nisidoziwinan,  
Endoodaman**

### **Maya Enankiimigag**

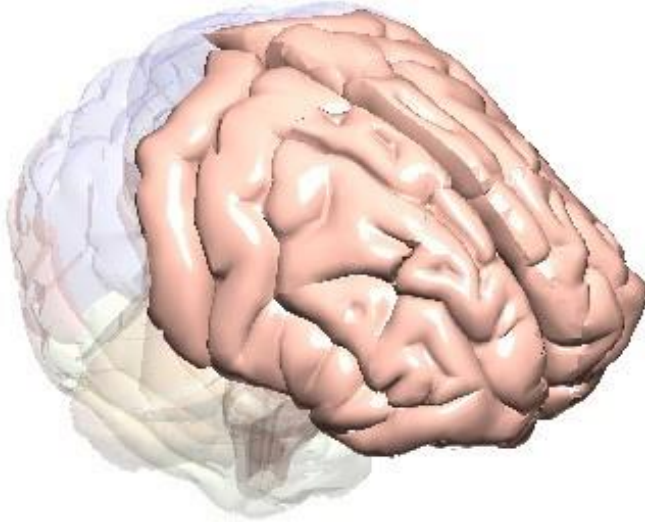
Owi Corpus Callosum dikobijigemigad newen niish ediwiwiing owi wiinindib awii naadmaagemigag dikobideg gikendamowin.

### **Debwewin**

Newen gnigaagimiseg naabon zhiwe miishkoons (dishko gonaa THC) zagisinon newen wiinindib wiikibijibigemigag (cannabinoid wiikibijigewinan) etemigag zhiwe corpus callosum. Ninda gnigaagimiseg naabon adaa aanjironan nikiiyaa wiinindib agaasing enji maajiging ginondiwaad. Zhiwe corpus callosum, adaa dodaagemigad ayaamang giiwaajibidemigag, myagi maage giiwaaji inendamowinan. Maanda age adaa ani aawon giiwashkweyaadiziwin, giiwinaadendamowin (gewe giizhaa e'niizaanziwaad).

# Gikendamaawiziwinan

## Frontal Lobe



### Naagidowendamang Miinwaa Inaaknigeng, Giizhendamang, Gikendamaawiziwinan, Giigidowin / Iniwewin, Endoodamang

#### Maya Enankiimigag

Owi frontal lobe aawon owi etemigag owi wiinindib gikendamowin miinwaa ne-aab debinam newen minjinendamowinan, zinagiziwinan naawitoong, inaaknigewin, inwiwewin, dinaangidoniwin, naagidowendamang, miinwaa bimaajjiwin.

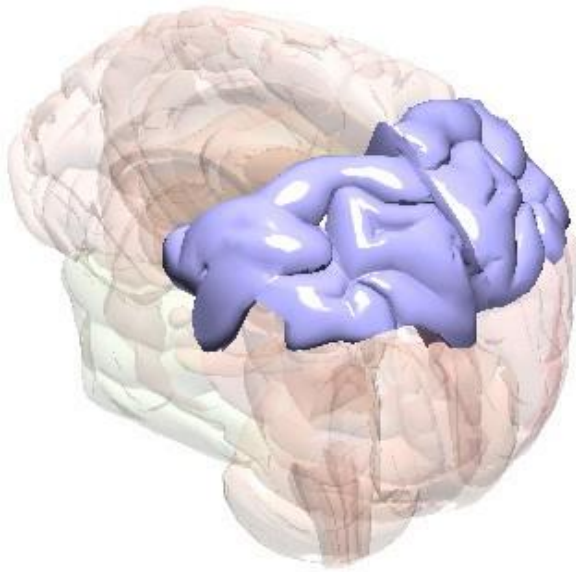
#### Debwewin

Newen gnigaagimiseg naabon zhiwe miishkoons (dishko gonaa THC) zagisinon newen wiinindib wiikibijibigemigag (cannabinoid wiikibijigewinan) etemigag zhiwe etemigag owi frontal lobe. Ninda gnigaagimiseg naabon adaa aanjironan nikiiyaa wiinindib agaasing enji maajjiging ginondiwaad. Inendamowin nyaagidowendang adaa madookidaan newen bemaadzijig inendamowin, gashkitowaad awii zhitowaad giizhendamowinan, inaaknigewaad, ozhisidowaad dinendamowinan miinwaa endodamowaad, zhitowaad makwenjigewinan miinwaa ne-aab debinamiwaad makwenjigewinan, naagidowendamang.



# Gikendamaawiziwinan

## Parietal Lobe



### GIKENDAMAAWIZIWINAN

#### Maya Enankiimigag

Owi parietal lobe aawon owi wiinindib bimaabiiginang nisidoziwinan gikendamowin, naadmaagemigag gnowendamang bimaajisemigag miinwaa waabmidamowin gwayaagong, giigidowin, waabmidamowin miinwaa nisdwaamjigewin.

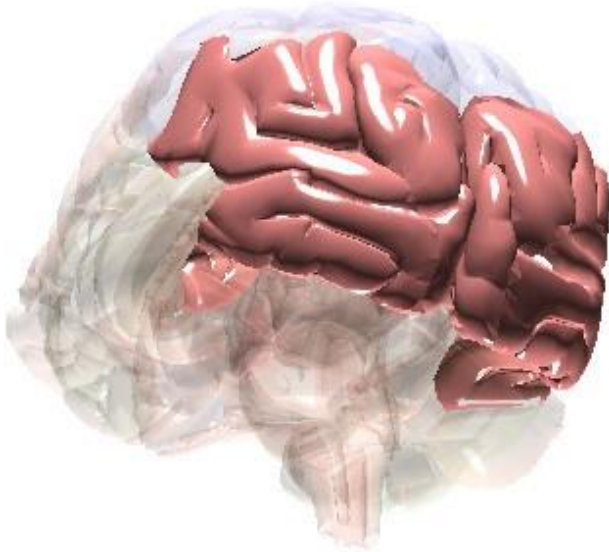
#### Debwewin

Newen gnigaagimiseg naabon zhiwe miishkoons (dishko gona THC) zagisinon newen wiinindib wiikibijibigemigag (cannabinoid wiikibijigewinan) etemigag zhiwe owi parietal lobe. Ninda gnigaagimiseg naabon adaa aanjironan nikiiyaa wiinindib agaasing enji maajjiging ginondiwaad. Zhiwe owi parietal lobe, maanda adaa ani aawon aanjiseemigag moozhichigewinan miinwaa waabmidamowinan e'digosing bimaazaamjigeng, gwiiniwizhayaawin, gwiiniwinendamang, miinwaa naajitoong maamowi bimaajimigag wiiyaw miinwaa zinagag giigidang.



# Gikendamaawiziwinan

## Occipital Lobe



### Gikendamaawiziwinan

#### Maya Enankiimigag

Owi occipital lobe aawon zhiwe owi wiinindib bimaabiiginang waabmdamiwin, apii temigag ayaawong makowendamowinan, miinwaa bimaajibideg gego.

### Debwewin

Newen gnigaagimiseg naabon zhiwe miishkoons (dishko gona THC) zagisinon newen wiinindib wiikibijibigemigag (cannabinoid wiikibijigewinan) etemigag zhiwe owi occipital lobe. Zhiwe owi occipital lobe, maanda adaa ani aawon aanjiseemigag ezhi waabmdaman gego, gashkitowin awii dibaamidaman apii ayaawong, miinwaa age bimaazaabmjigewinan.

# Gikendamaawiziwinan

## Corpus Callosum



**Naagidowendamang  
Miinwaa Inaaknigeng  
Bimaajiiwin Miinwaa  
Maamowi Bimaajiiwigag  
Wiiyaw, Giizhendamang,  
Izhayaawin Miinwaa  
Inendamowin,  
Nisidoziwinan,  
Endoodaman**

### **Maya Enankiimigag**

Owi Corpus Callosum dikobijigemigad newen niish ediwiwiing owi wiinindib awii naadmaagemigag dikobideg gikendamowin.

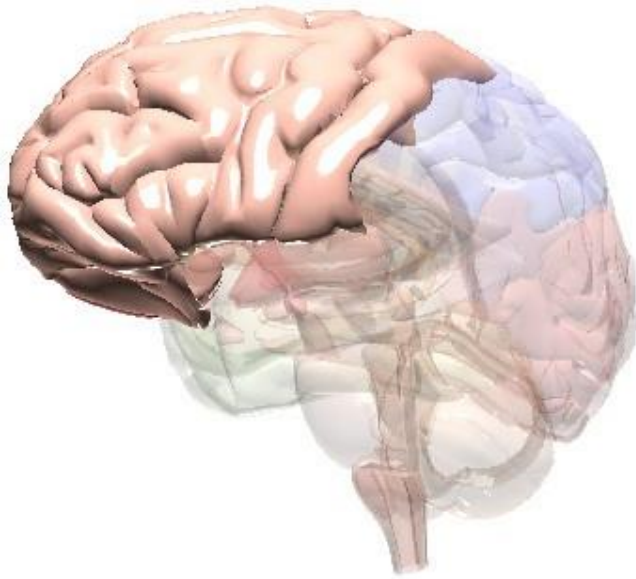
### **Debwewin**

Newen gnigaagimiseg naabon zhiwe miishkoons (dishko gona THC) zagisinon newen wiinindib wiikibijibigemigag (cannabinoid wiikibijigewinan) etemigag zhiwe corpus callosum. Ninda gnigaagimiseg naabon adaa aanjironan nikiiyaa wiinindib agaasing enji maajiging ginondiwaad. Zhiwe corpus callosum, adaa dodaagemigad ayaamang giiwaajibidemigag, myagi maage giiwaaji inendamowinan. Maanda age adaa ani aawon giiwashkweyaadiziwin, giiwinaadendamowin (gewe giizhaa e'niizaanziwaad).



# Giigidowin / Iniwewin

## Frontal Lobe



### Naagidowendamang Miinwaa Inaaknigeng, Giizhendamang, Gikendamaawiziwinan, Giigidowin / Iniwewin, Endoodamang

#### Maya Enankiimigag

Owi frontal lobe aawon owi etemigag owi wiinindib gikendamowin miinwaa ne-aab debinam newen minjinendamowinan, zinagiziwinan naawitoong, inaaknigewin, inwiwewin, dinaangidoniwin, naagidowendamang, miinwaa bimaajjiwin.

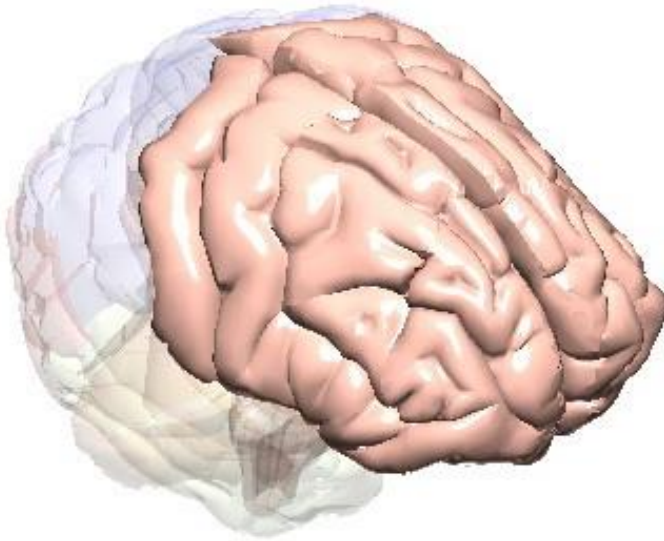
### Debwewin

Newen gnigaagimiseg naabon zhiwe miishkoons (dishko gonaa THC) zagisinon newen wiinindib wiikibijibigemigag (cannabinoid wiikibijigewinan) etemigag zhiwe etemigag owi frontal lobe. Ninda gnigaagimiseg naabon adaa aanjironan nikiiyaa wiinindib agaasing enji maajjiging ginondiwaad. Inendamowin nyaagidowendang adaa madookidaan newen bemaadzijig inendamowin, gashkitowaad awii zhitowaad giizhendamowinan, inaaknigewaad, ozhisidowaad dinendamowinan miinwaa endodamowaad, zhitowaad makwenjigewinan miinwaa ne-aab debinamiwaad makwenjigewinan, naagidowendamang.



# Endoodamang

## Frontal Lobe



### **Naagidowendamang Miinwaa Inaaknigeng, Giizhendamang, Gikendamaawiziwinan, Giigidowin / Iniwewin Endoodamang**

#### **Maya Enankiimigag**

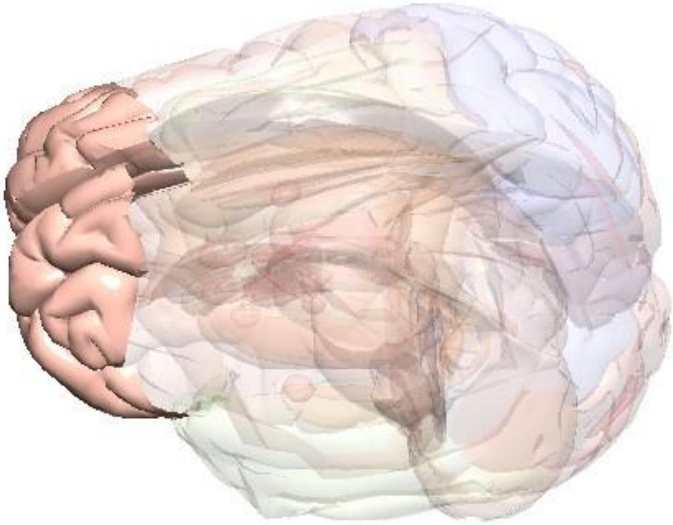
Owi frontal lobe aawon owi etemigag owi wiinindib gikendamowin miinwaa ne-aab debinam newen minjinendamowinan, zinagiziwinan naawitoong, inaaknigewin, inwiwewin, dinaangidoniwin, naagidowendamang, miinwaa bimaajjiwin.

#### **Debwewin**

Newen gnigaagimiseg naabon zhiwe miishkoons (dishko gonaa THC) zagisinon newen wiinindib wiikibijibigemigag (cannabinoid wiikibijigewinan) etemigag zhiwe etemigag owi frontal lobe. Ninda gnigaagimiseg naabon adaa aanjironan nikiiyaa wiinindib agaasing enji maajjiging ginondiwaad. Inendamowin nyaagidowendang adaa madookidaan newen bemaadzijig inendamowin, gashkitowaad awii zhitowaad giizhendamowinan, inaaknigewaad, ozhisidowaad dinendamowinan miinwaa endodamowaad, zhitowaad makwenjigewinan miinwaa ne-aab debinamiwaad makwenjigewinan, naagidowendamang.

# Endoodamang

## Prefrontal Cortex



### Naagidowendamang Miinwaa Inaaknigeng, Giizhendamang, Doodamowing

#### Maya Enankiimigag

Owi Prefrontal Cortex aawon waajitemigag owi fontal lobe zhiwe owi wiinindib naagidowendang, inaakinigemigag, miinwaa zhitood giizhendamowinan.

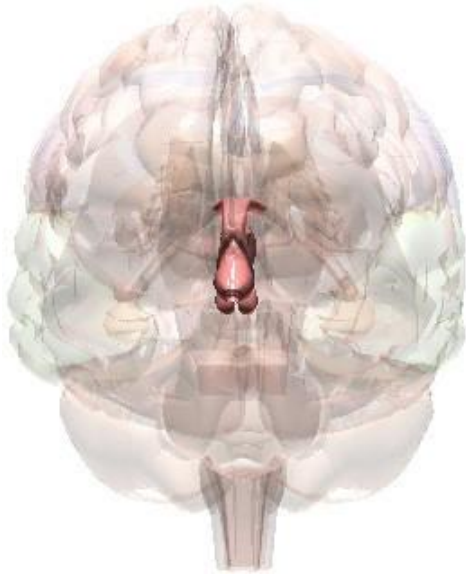
### Debwewin

Newen gnigaagimiseg naabon zhiwe miishkoons (dishko gonaa THC) zagisinon newen wiinindib wiikibijibigemigag (cannabinoid wiikibijigewinan) etemigag zhiwe owi prefrontal cortex. Ninda gnigaagimiseg naabon adaa aanjironan nikiiyaa wiinindib agaasing enji maajjiging ginondiwaad. Zhiwe prefrontal cortex adaa madookidaadaan owi nikiiyaa bemaadizid enendang, gashkitowaad awii zhitowaad giizhendamowinan, inaaknigewaad miinwaa ozhisidowaad dinendamowinan.



# Endoodamang

## Hypothalamus



### Inendamowinan Miinwaa Izhayaawingan, Endoodamang

#### Maya Enankiimigag

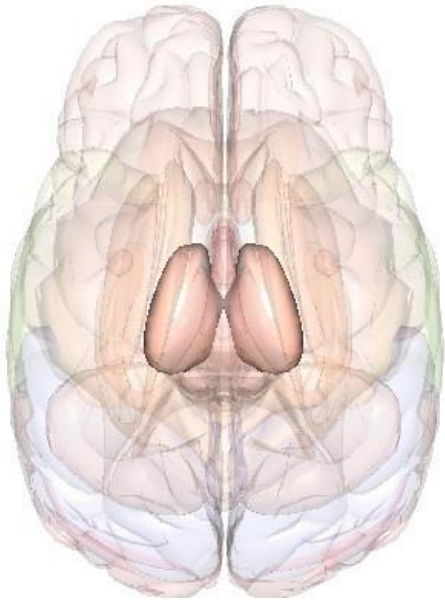
Owi hypothalamus aawon owi wiinindib gimaakidang nibewin, jepindamang, zaabendamang awii wiisining miinwaa gaaskinaabaagwewin miinwaa age ezhi nakweshkaman godogitowendamowin.

### Debwewin

Newen gnigaagimiseg naabon zhiwe miishkoons (dishko gona THC) zagisinon newen wiinindib wiikibijibigemigag (cannabinoid wiikibijigewinan) etemigag zhiwe owi hypothalamus. Ninda gnigaagimiseg naabon adaa aanjironan nikiiyaa wiinindib agaasing enji maajjiging ginondiwaad. Zhiwe owi hypothalamus, adaa ani aawon maanda ekozing, giikiimigoshing miinwaa bekaadenadmang. Maanda age adaa ani aawon bakade asayaawin ('owi aabaji wiisining') miinwaa gaaskinaabegiweng.

# Endoodamang

## Thalamus



### Bimaajiiwin Miinwaa Maamowi Nakiimigag Wiiyaw, Endodamang

#### Maya Enankiimigag

Newen gnigaagimiseg naabon zhiwe miishkoons (dishko gonaa THC) zagisinon newen wiinindib wiikibijibigemigag (cannabinoid wiikibijigewinan) etemigag zhiwe owi thalamus, maanda ada ani zhiwebad naajitoong maamowi nakiimigag wiiyaw, aanjibidemigag owi nibewin/ gizhkoziwin ezhibidemigag, miinwaa aanjiseemigag endoodamang e' digosing giwashkweyaadiziwin miinwaa giwinaadendamowin (gewe giizhaa e'niizaanziwaad).

#### Debwewin

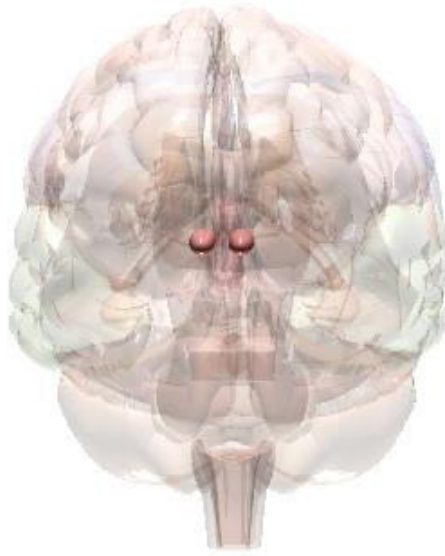
Newen gnigaagimiseg naabon zhiwe miishkoons (dishko gonaa THC) zagisinon newen wiinindib wiikibijibigemigag (cannabinoid wiikibijigewinan) etemigag zhiwe owi thalamus. Ninda gnigaagimiseg naabon adaa aanjironan nikiiyaa wiinindib agaasing enji maajiging ginondiwaad. Zhiwe owi thalamus adaa ani aawon owi naajitoong maamowi nakiimigad wiiyaw, aanjibidemigag owi nibewin-gizhkoziwin ezhibidemigag, miinwaa aanjiseemigag endoodamang e' digosing giwashkweyaadiziwin miinwaa giwinaadendamowin (gewe giizhaa e'niizaanziwaad).

**COPY IS THE SAME  
Should start with  
"Owi Thalamus"**



# Endoodamang

## Nucleus Accumbens



### Inendamowinan Miinwaa Izhayaawingan, Endoodamang

#### Maya Enankiimigag

Owi nucleus accumbens aawon owi wiinindib ado minendamowin miinwaa dibamaadiwin zhichigewin miinwaa gagwekisidoon jependamowin.

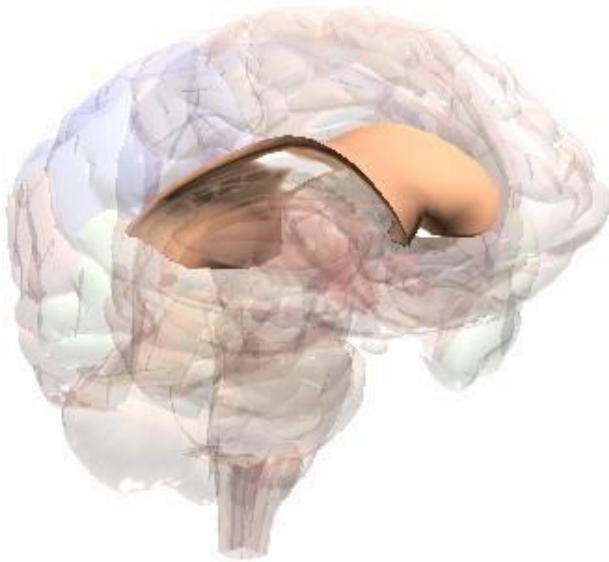
### Debwewin

Newen gnigaagimiseg naabon zhiwe miishkoons (dishko gonaa THC) zagisinon newen wiinindib wiikibijibigemigag (cannabinoid wiikibijigewinan) etemigag zhiwe owi nucleus accumbens. Ninda gnigaagimiseg naabon adaa aanjironan nikiiyaa wiinindib agaasing enji maajjiging ginondiwaad. Zhiwe owi nucleus accumbens, maanda adaa ani aawon 'oshpi namgiwin' apii nikaazang miishkoons miinwaa maajitaamigag penimandmang maage mimanjimigiwin miishkoons.



# Endoodamang

## Corpus Callosum



**Naagidowendamang  
Miinwaa Inaaknigeng  
Bimaajiiwin Miinwaa  
Maamowi Bimaajiiwigag  
Wiiyaw, Giizhendamang,  
Izhayaawin Miinwaa  
Inendamowin,  
Nisidoziwinan,  
Endoodaman**

### **Maya Enankiimigag**

Owi Corpus Callosum dikobijigemigad newen niish ediwiwiing owi wiinindib awii naadmaagemigag dikobideg gikendamowin.

### **Debwewin**

Newen gnigaagimiseg naabon zhiwe miishkoons (dishko gonaa THC) zagisinon newen wiinindib wiikibijibigemigag (cannabinoid wiikibijigewinan) etemigag zhiwe corpus callosum. Ninda gnigaagimiseg naabon adaa aanjironan nikiiyaa wiinindib agaasing enji maajjiging ginondiwaad. Zhiwe corpus callosum, adaa dodaagemigad ayaamang giiwaajibidemigag, myagi maage giiwaaji inendamowinan. Maanda age adaa ani aawon giiwashkweyaadiziwin, giiwinaadendamowin (gewe giizhaa e'niizaanziwaad).